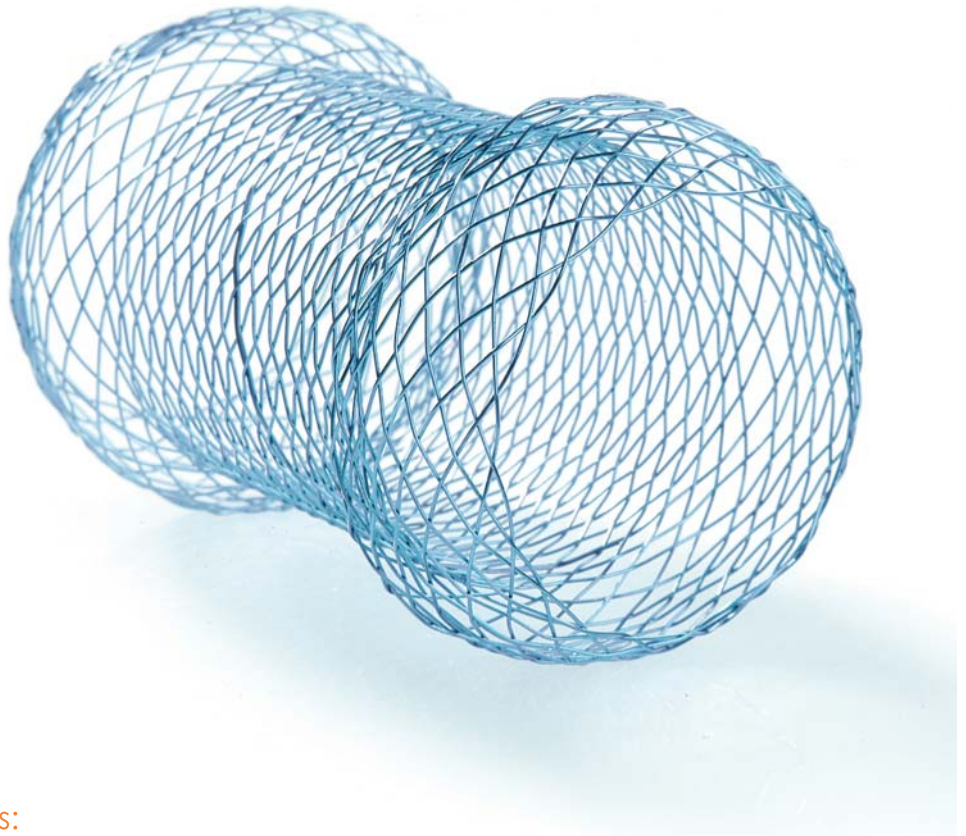


## Colonic and Rectal Stents

Colonic stents demand a particularly high positional stability. The OTW colon and rectum stents of MICRO-TECH have a design that guarantees just that. The good hold of the OTW colonic stents is achieved by a square-edged transition situated near each end of the stent. This virtually anchors the stent inside the lumen and adapts it optimally to the anatomy and peristalsis of the colon.

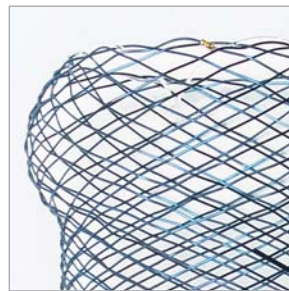
In contrast, rectal stents are less stimulating and ball-shaped. This ensures that the patient senses less irritations in this sensitive area, thus distinctly increasing the quality of life.

The partially sheathed OTW colonic and rectal stents produce very high radial forces. They should therefore be placed into straight segments of the colon, and not into the bent segments, such as the right and left flexure of the colon.



### Performance Characteristics:

- self-expanding
- Nitinol mesh with atraumatic ends
- anatomical design
- excellent positional stability
- high radial force
- resistant and elastic covering
- high radiopacity
- extraction threads for removal and repositioning
- guide wire-compatible up to 0.035 inches
- also available as TTS systems



Spherical end



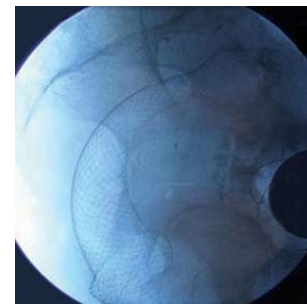
Mushroom design

## Successful in practical use

The stents are convincing in practice by the good opening behaviour and the special distinctive end shape of the colon stent with which the stents can be firmly anchored in the semilunar folds of the colon. In order to facilitate orientation during release, the stents have additional X-ray markings at all significant points.



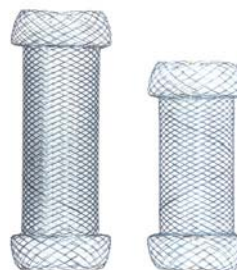
Control with contrast medium



Released colonic stent

## Positionally stable in all sizes

The colon and rectum stents are available in a length of either 80 mm or 100 mm. You can also choose between non-covered and partially covered versions.



Colon stents



Rectum stents

## Specifications:

REF	Centre Dia. (mm)	End Dia. (mm)	Length (mm)	Covering (mm)	Application	End design	
						proximal	distal
<b>Stents without covering</b>							
ST34-551.30.080	30	36	80	without	colon	mushroom	mushroom
ST34-551.30.100	30	36	100	without	colon	mushroom	mushroom
ST34-554.25.080	25	30	80	without	colon	spherical	spherical
ST34-554.25.100	25	30	100	without	colon	spherical	spherical
ST34-551.30.080	30	36	80	without	rectum	spherical	spherical
ST34-551.30.100	30	36	100	without	rectum	spherical	spherical
<b>Stents with covering</b>							
ST34-552.30.080	30	36	80	50	colon	mushroom	mushroom
ST34-552.30.100	30	36	100	70	colon	mushroom	mushroom
ST44-332.30.080	30	36	80	50	rectum	spherical	spherical
ST44-332.30.100	30	36	100	70	rectum	spherical	spherical